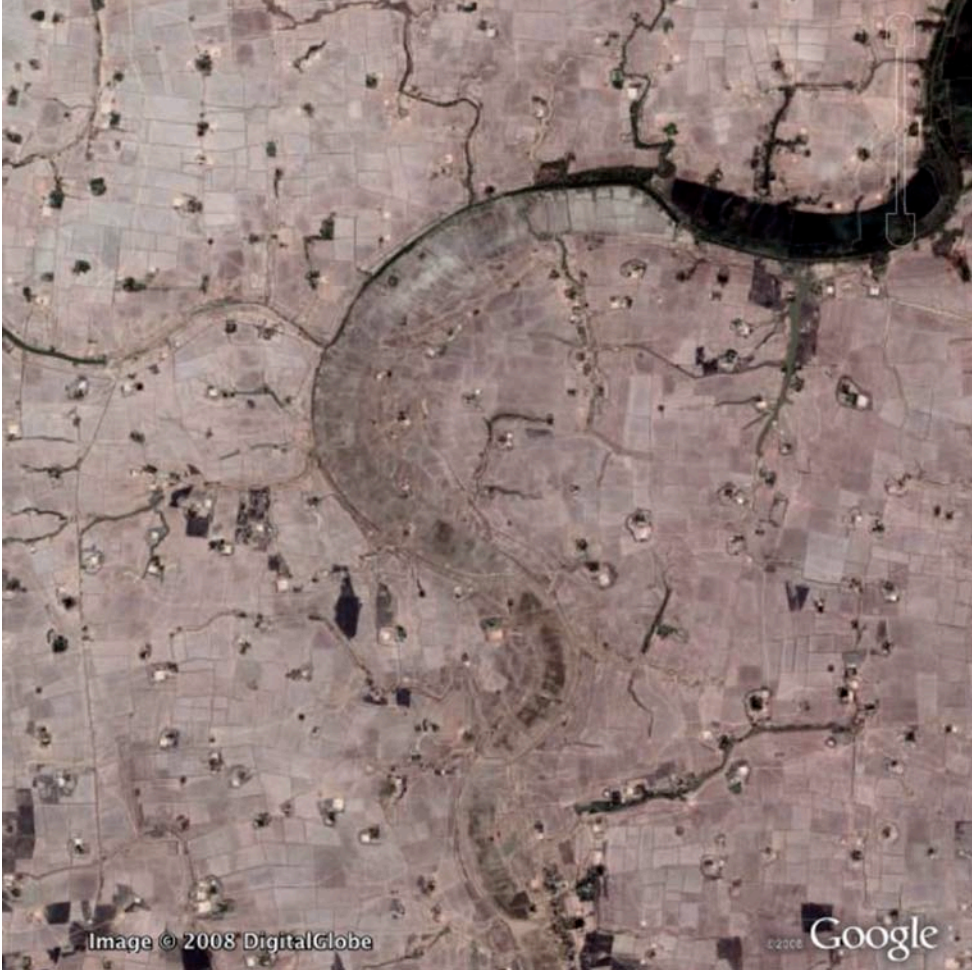


Location: 12 miles south of Rangoon



Satellite image of settlements before cyclone Nargis struck on 3rd May 2008



Satellite image taken 7th May 2008 showing flooding caused by cyclone Nargis



For further information please contact Burma Campaign UK  
Tel: +44 (0) 20 7324 4710  
Fax: +44 (0) 20 7324 4717  
info@burmacampaign.org.uk  
www.burmacampaign.org.uk



Satellite images provided courtesy of GeoEye/CRISP-Singapore, Google and Digital Globe.